

120° 59' 30" 120° 59' 120° 58' 30" 120° 58' 120° 57' 30" 120° 57' 120° 56' 30" W WGS84

38° 58' 30" N

38° 58'

38° 57' 30"

38° 57'

38° 56' 30"

38° 56'

38° 55' 30"

38° 58' 30" N

38° 58'

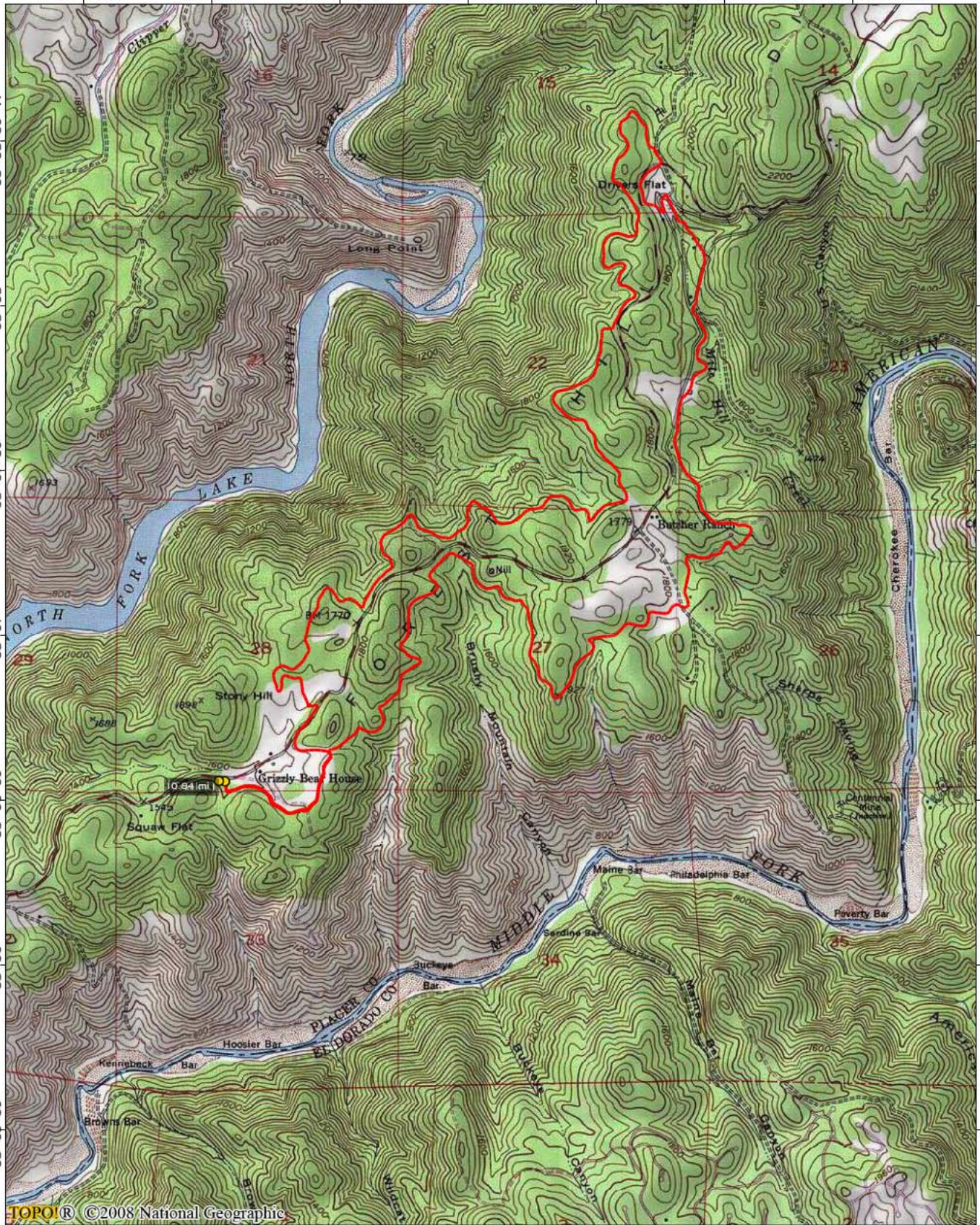
38° 57' 30"

38° 57'

38° 56' 30"

38° 56'

38° 55' 30"



TOPO!® ©2008 National Geographic

120° 59' 30" 120° 59' 120° 58' 30" 120° 58' 120° 57' 30" 120° 57' 120° 56' 30" W WGS84

